

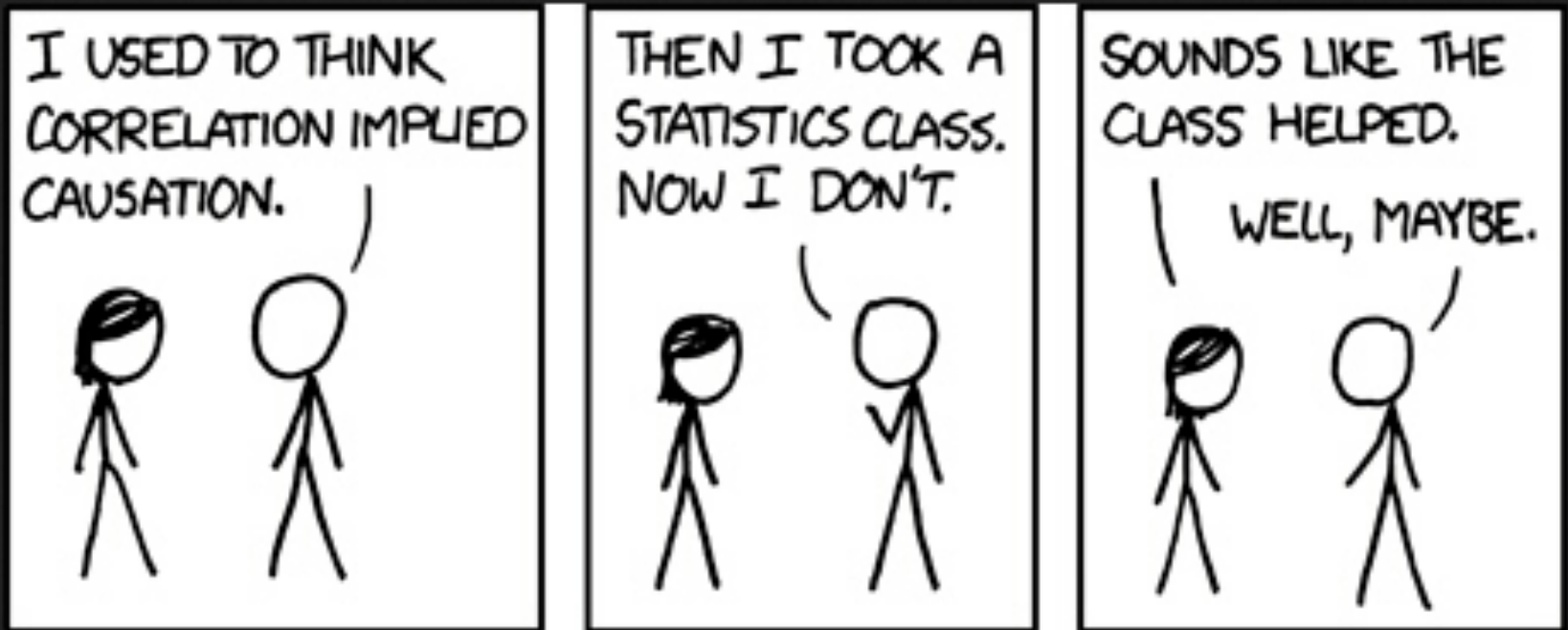
Social Scientific Frameworks For Guiding the Use of Social Media and Big Data in Hyperlocal Human Dynamics Research

Lourdes S. Martinez, Ph.D.

San Diego, CA

August 11, 2015

Why theory?



Why MORE theory?

- *“Just as the telescope enabled us to comprehend the universe and the microscope allowed us to understand germs, the new techniques for collecting and analyzing huge bodies of data will help us make sense of our world in ways we are just starting to appreciate.”*

(Mayer-Schönberger & Cukier, 2013)



How do we get more theory?

- Emerging technologies such as social media and new methodologies for analyzing big data
 - Re-examine established frameworks and cultivate new ones



Some Possibilities

- Social Amplification of Risk Framework (SARF)
- M3D
- Social Network Theory (SNT)

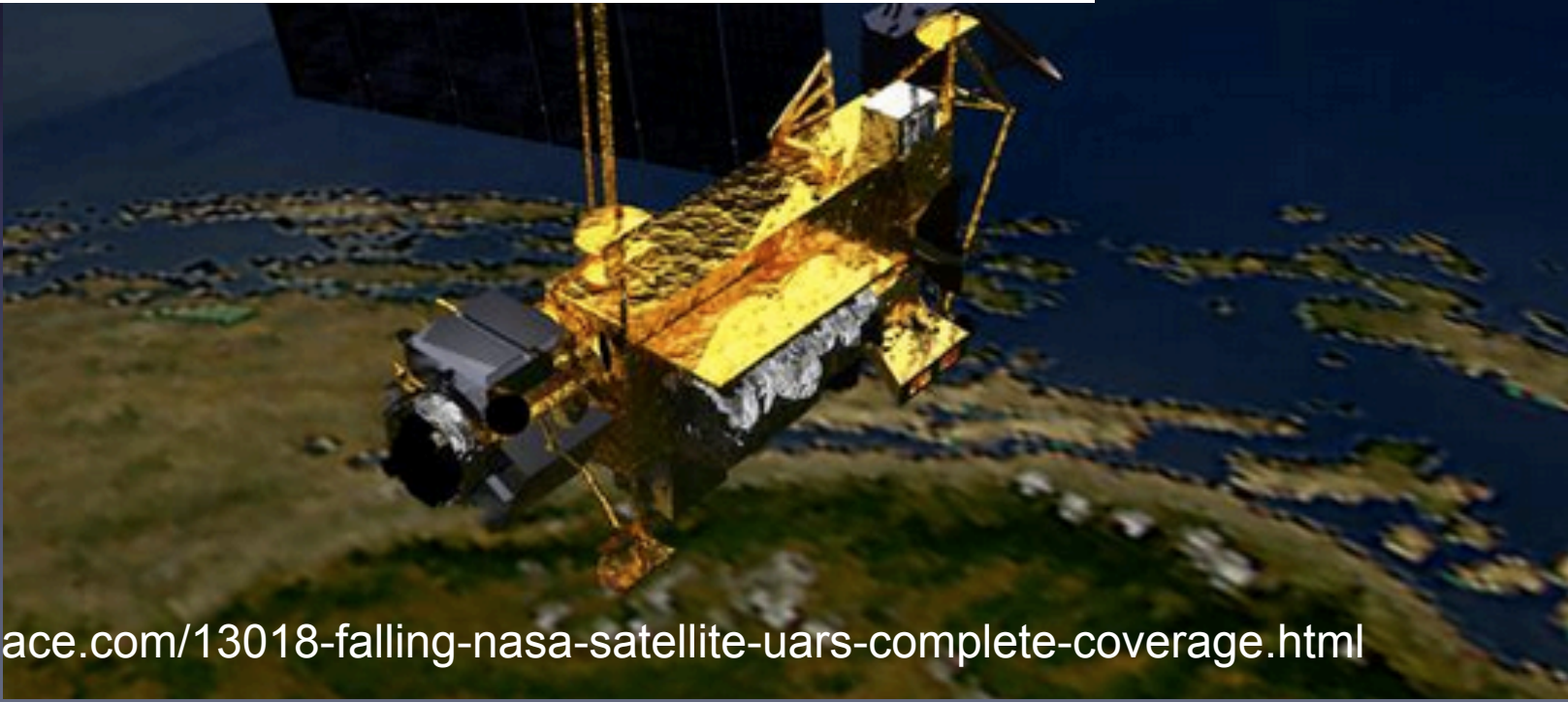
SARF

- Distortion in public's responses to experts' evaluation of hazard risks
 - Risk amplification or intensification

SARF

Complete Coverage of NASA's Falling Satellite UARS

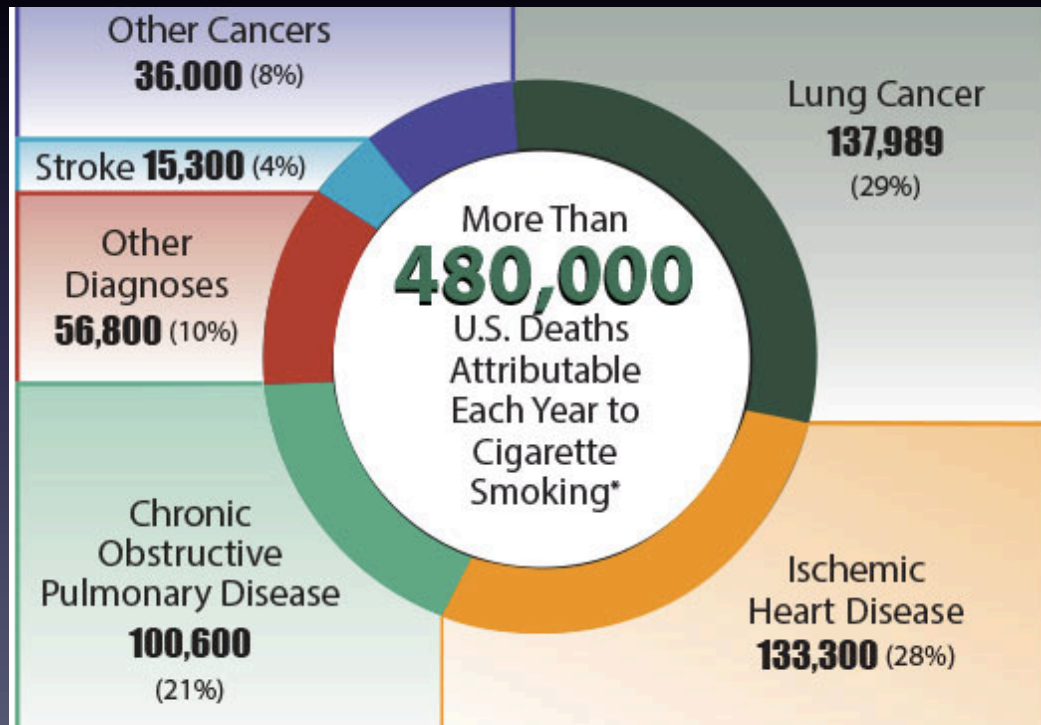
SPACE.com Staff | September 27, 2011 01:30pm ET



<http://www.space.com/13018-falling-nasa-satellite-uars-complete-coverage.html>

SARF

Annual Deaths Attributable to Cigarette Smoking—United States, 2005–2009



SARF & Hyperlocal Human Dynamics

- Algorithms based on keywords
- Layer with existing data
- Develop profiles for targeting intervention efforts

M3D

- How a meme is diffused through various levels within a social system

M3D

Their first injection was a vaccination.

Protect your children from vaccinations.

Vaccinations leave a lasting psychological belief that injecting is beneficial. Studies have shown that children who are vaccinated are 85% more likely to inject heroin than those who are not.

Vaccinations. Don't lose your child to drugs.

Call 1-800-128-093 for more information.



M3D & Hyperlocal Human Dynamics



<http://vision.sdsu.edu/hdma/smart/flu2>

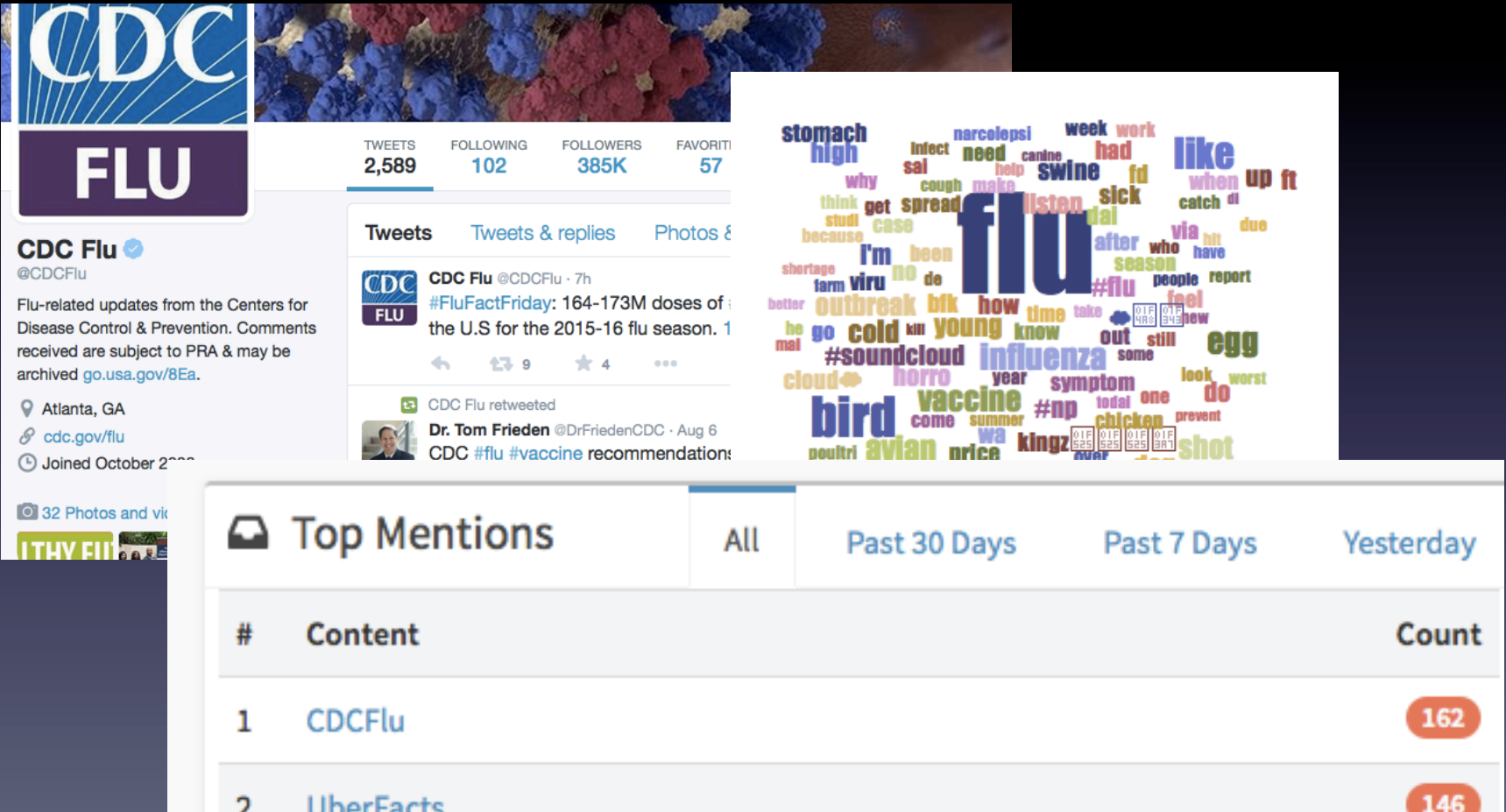
**DON'T
GET
THE FLU.
DON'T
SPREAD
THE FLU.**

**GET
VACCINATED.**

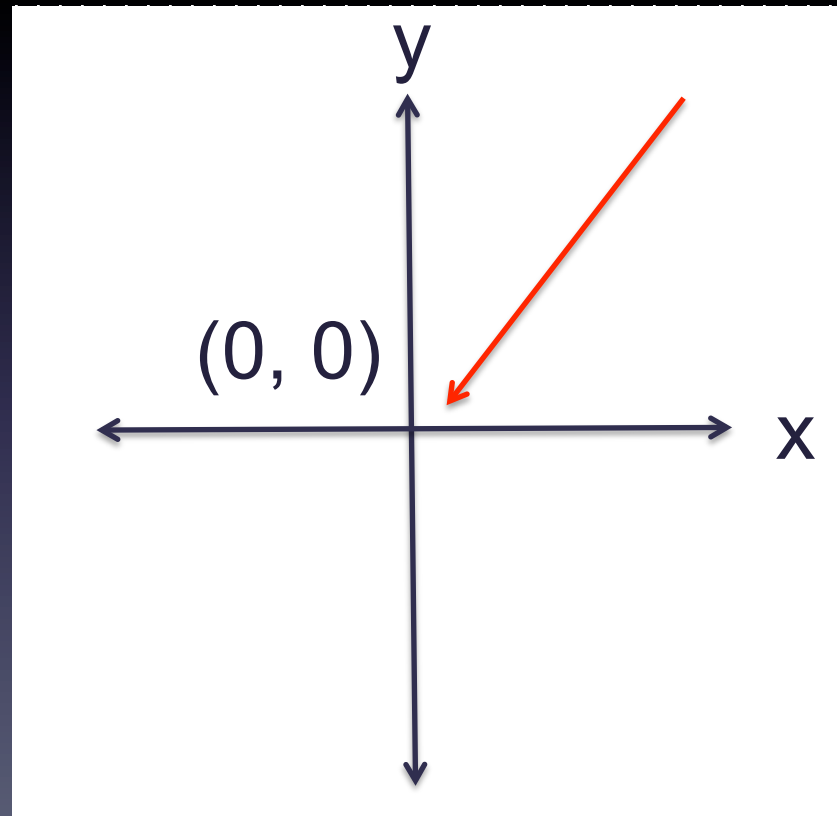
cdc.gov/flu



M3D &



M3D & Hyperlocal Human Dynamics



SNT

- Focuses on processes that explain effects of network properties

Level of Effects

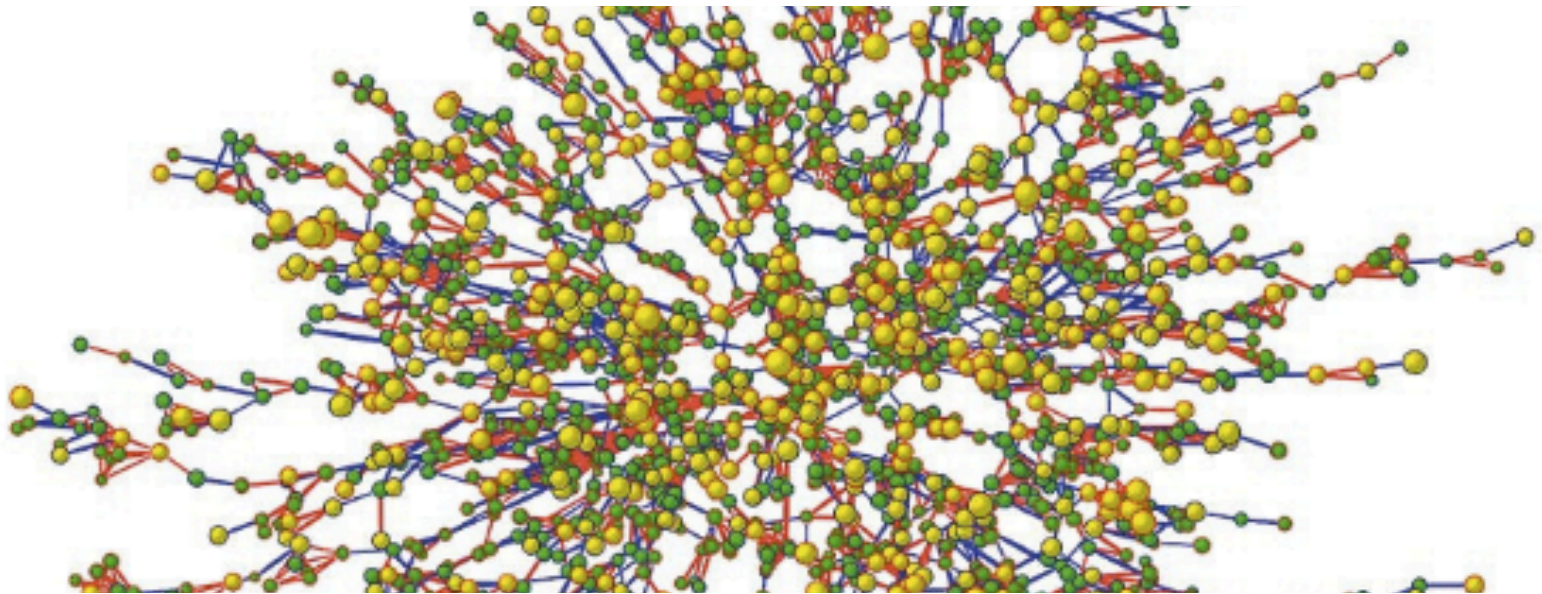
- Individual
- Network
- Individual x Network

Individual Level Effects

TIME

Obesity Is Contagious, Study Finds

By LAURA BLUE | Wednesday, July 25, 2007



September 13, 2009

The New York Times

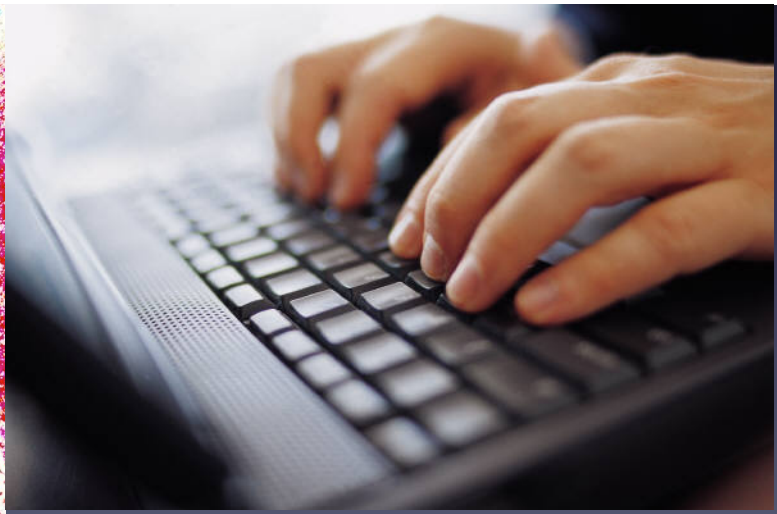
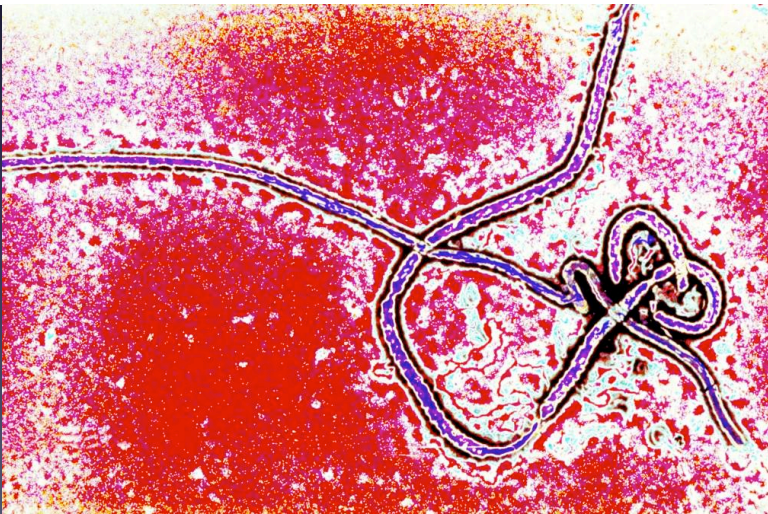
Are Your Friends Making You Fat?

<http://www.nejm.org/doi/full/10.1056/NEJMsa066082>

Network Level Effects

TIME

Fear, Misinformation, and Social Media Complicate Ebola Fight



<https://timedotcom.files.wordpress.com/2015/02/128581294-copy.jpg?quality=65&strip=color&w=1012>

Individual x Network Effects

Los Angeles Times

Study links teenage bullying to social status



http://www.imdb.com/media/rm874679296/tt0377092?ref_=ttmd_md_pv

Social Network Analysis (SNA)

“Premise that social life is created primarily and most importantly by relations and patterns formed by these relations”

(Marin & Wellman, 2011, p. 11)



SNT/SNA & Hyperlocal Human Dynamics

- Identify and compare network properties in geographically defined communities, observing how they change over time
- Measure and map flow mechanisms within and between geographical communities

In sum...

- Theory arguably more important than ever in big data era
- Social science theories have much to offer in terms of guiding human hyperlocal dynamics research